

G266 OPTI-PROTEIN XL MARKER

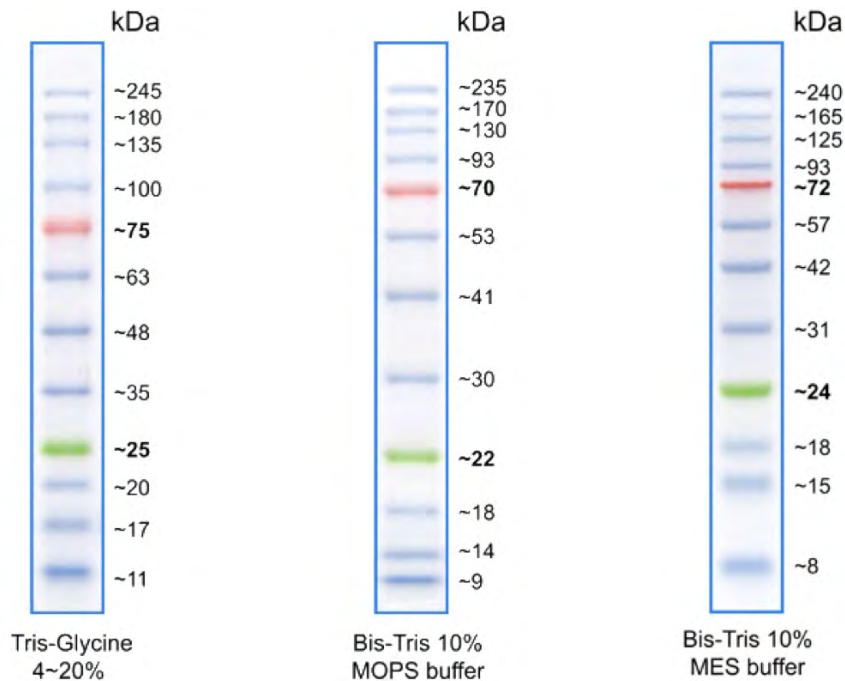
Opti-Protein XL Marker/Ladder consists of 12 proteins that resolve into sharp, tight bands in the range of 10-245 kDa. This unique protein ladder allows you to monitor protein separation during electrophoresis, estimate molecular weight of the protein of interest, and evaluate western blot transfer efficiency. Proteins are covalently coupled with a blue chromophore except for two reference bands (one green and one red band at 25kDa and 75 kDa respectively) when separated on SDS-PAGE (Tris-glycine buffer).

Range:

10kDa-245kDa

Quantity:

500 µl/100 loads



Shipping Time
24h



Shipping Fees
€ 0



Shipping Fees for temperature controlled products
€ 0



Minimum Order
NO

